

GENERAL INFORMATION

Project Name: _____
 Item: _____
 Quantity: _____
 Model: AX7930-2
 Length: _____

STANDARD SPECIFICATIONS

- 1" Diameter Brushed Aluminum Posts
- 3/8" Clear Tempered Front Glass Panels (max. span 66")
- 3/8" Clear Tempered Glass Top Shelf
- 1/4" Clear Tempered Glass End Panels
- 1" Radius Glass Corners
- Top Glass Clips

OPTIONS AND ACCESSORIES

NSF-LISTED FINISH OPTIONS

- | | |
|--|---|
| <input type="checkbox"/> Brushed Aluminum (Standard) | <input type="checkbox"/> Stainless Steel #4 |
| <input type="checkbox"/> Stainless Steel #8 (Chrome) | <input type="checkbox"/> Matte Black |
| <input type="checkbox"/> Gloss Black | <input type="checkbox"/> Wrinkle Black |
| <input type="checkbox"/> Prismatic Brass | <input type="checkbox"/> Smoked Copper |
| <input type="checkbox"/> Statuary Bronze | |
| <input type="checkbox"/> Other _____ | |

GLASS FINISHES

- | | |
|---|---|
| <input type="checkbox"/> Clear (Standard) | <input type="checkbox"/> Low-Iron |
| <input type="checkbox"/> Frosted | <input type="checkbox"/> Frosted Logo/Imprint |
| <input type="checkbox"/> Pattern | |

GLASS CORNERS

- 1" Radius Corners (Standard) Square Corners

MOUNTING STYLES (SELECT ONE)

See Installation Page for More Details.

Above-Counter: Stainless Steel Counter

Under-Counter: Stainless Steel Counter

(Requires Under-Counter Reinforcement & Access)

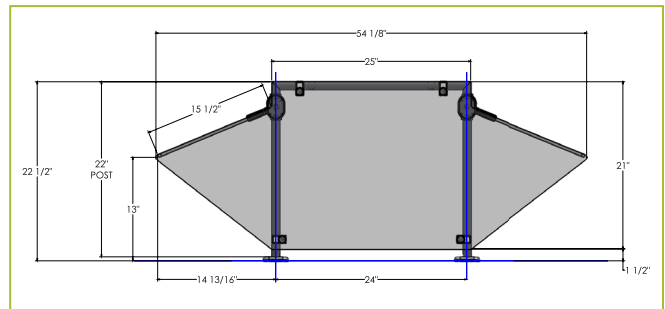
Above-Counter: Millwork Counter

Under-Counter: Millwork Counter

Approval Drawings Required
 Specifications subject to change without notice.

AX7930-2

Double-Sided Self Serve w/Top Shelf



To meet NSF guidelines, end panels are included on all BSI quotations unless specifically excluded. (See end panel page for more details).

LIGHT AND WARMER OPTIONS

Model #	Description
<input type="checkbox"/> 2580	BSI Slimline LED Light
<input type="checkbox"/> 790	BSI Stealth Heat-Only Warmer
<input type="checkbox"/> 705	BSI Stealth Heat-Light Combo
<input type="checkbox"/> 500	BSI Stealth Heat-Light-Heat Combo

All BSI light and warmer units are UL Listed. See light and warmer spec sheets for detailed information. Also available with other manufacturers' heat and light units. Contact BSI for details.

- | | |
|--|--|
| <input type="checkbox"/> SSI: EZ Mount 2" x 8" Flange | |
| <input type="checkbox"/> SSU3-H: Heavy-Duty Flange | <input type="checkbox"/> SSU3-N: Narrow Flange |
| <input type="checkbox"/> SSU5-H: Heavy-Duty Flange | <input type="checkbox"/> SSU5-N: Narrow Flange |
| <input type="checkbox"/> MW1: Heavy-Duty Flange | <input type="checkbox"/> MW2: Narrow Flange |
| <input type="checkbox"/> MWU3: Narrow Flange | <input type="checkbox"/> MWU5: Heavy-Duty Flange |
| <input type="checkbox"/> MWU4: Compression Installation (not recommended for solid surfaces) | |

