



OWNER'S MANUAL & WARRANTY



AXCES™ FOOD SHIELDS

LIGHTS & WARMERS

Thank you for choosing products from BSI. We appreciate your business and are available to assist you with all of your needs.

This manual has been designed to help you better understand your product and its proper usage.

If you have questions that go beyond this detailed manual, please contact our Customer Service Department at 1.800.662.9595.

Thank you,
The BSI Team

TABLE OF CONTENTS

| | | | |
|---|------|--|----|
| Contents | 3 | Lights and Warmers | |
| Introduction | 3 | Safety Precautions | 12 |
| Important Owner Information | 3 | Receiving and Inspecting the Equipment | 12 |
| Safety Precautions | 4 | Models | 12 |
| Receipt and Inspection of Equipment | 4 | Cleaning & Identifying Equipment | 13 |
| | | Changing LED Bulb | 13 |
| | | Heating Elements | 14 |
| Axces™ Food Shields | | Ordering Parts | 14 |
| Models | 4 | Wiring Installations | 15 |
| Basic Components and Layout | 5 | Wiring Diagrams | 16 |
| Axces Bracket | 5 | | |
| Axces Bracket Assembly & Parts | 6 | Warranty | 17 |
| Glass & Cleaning Instructions | 7 | | |
| End Panels | 8 | | |
| Installation Options | 9-10 | | |

This manual is an important part of your equipment. Your Owner's Manual should be stored in a safe location, as it will be useful for the life of your product. It contains important safety information concerning the maintenance, operation, and servicing of these products.

Failure to properly follow this manual may result in serious injury. Do not operate this equipment unless you have read and understood the manual contents.

IMPORTANT OWNER INFORMATION

Record your guards' model number(s) and warming unit serial number(s) (if applicable) to use as a reference when contacting your local representative or BSI headquarters.

| | |
|-------------------|--|
| Model No.: | |
| Serial No.: | |
| Model No.: | |
| Serial No.: | |
| Date of Purchase: | |
| Other: | |

BSI Corporate Contact Information

Business Hours: 8:00 AM to 5:00 PM MST
Telephone: 800.662.9595
Fax: 303.331.8444
Web Address: www.bsidesigns.com

SAFETY PRECAUTIONS



The Axces™ food shield must be installed in accordance with applicable installation code by a person familiar with the product's construction, operation, and potential hazards involved.

RECEIPT AND INSPECTION OF EQUIPMENT

Care should be taken during unloading and uncrating to avoid equipment damage.

1. Visually inspect the package, skid, or container exterior. Any damage should be noted and reported to the delivering carrier immediately.
2. Open and inspect contents for broken glass and verify that all items were received.
3. In the event that damage is discovered, notify the carrier and request freight damage forms.
4. Request an inspection by the shipping company of the damaged equipment. This should be done within 10 days of equipment receipt.
5. Retain all crating materials until an inspection has been made or waived.
6. All packages contain a product owner's manual and warranty document, along with installation drawings for your installer.

AXCES MODELS

Axces food shields are manufactured in many different configurations. While the components are similar, your model's glass and posts may not be. The models shown below should be maintained in the same manner based on the instructions within this manual.



AX7500



AX7915



AX7930



AX7930-2

All Axces™ models are certified by NSF.



BASIC COMPONENTS & LAYOUT

Figure 1

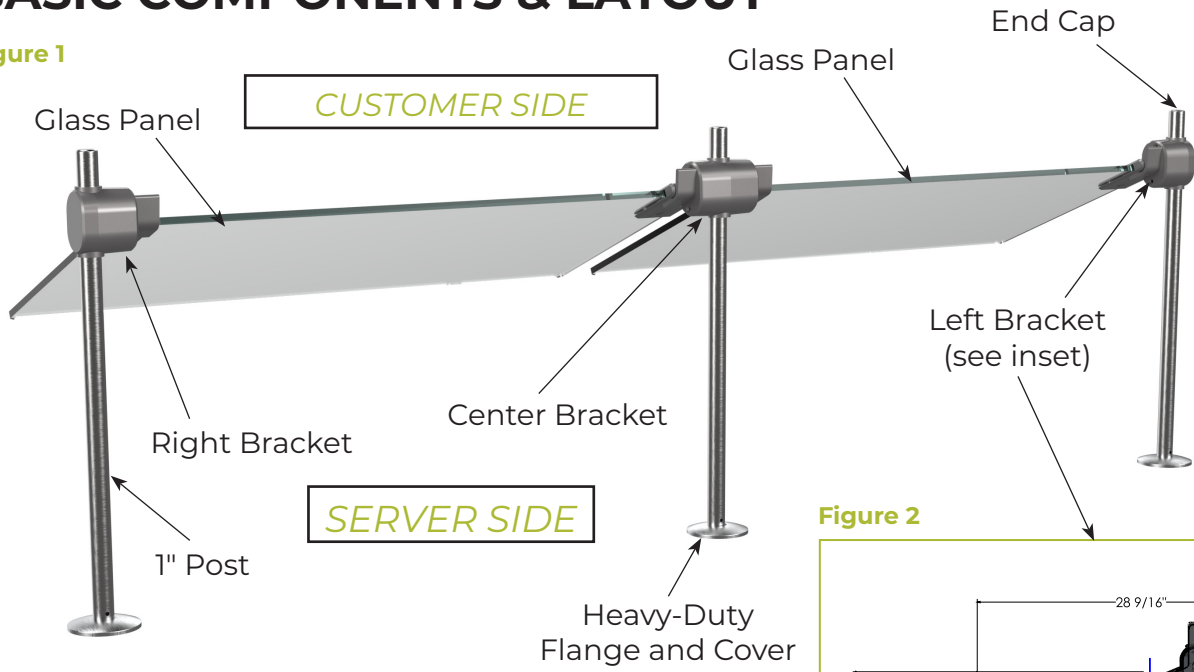


Fig. 1 shows two glass panels with a center bracket.

Figure 2

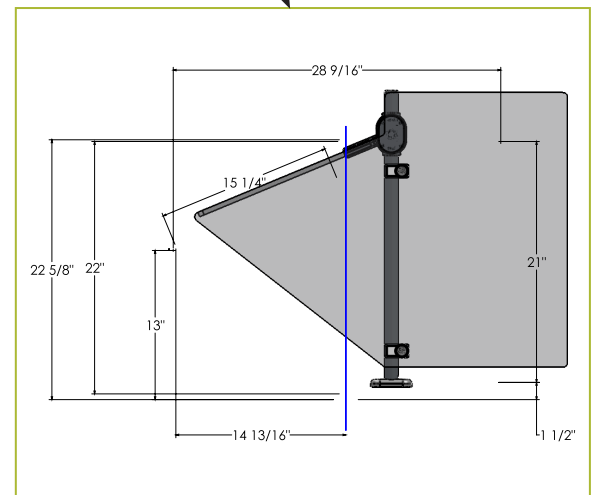
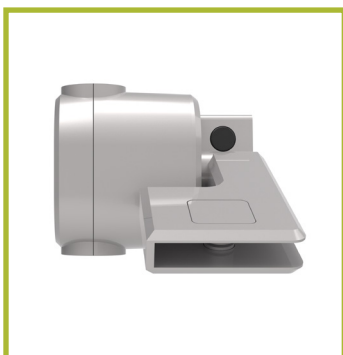


Fig. 2 shows section view of Fig. 1.

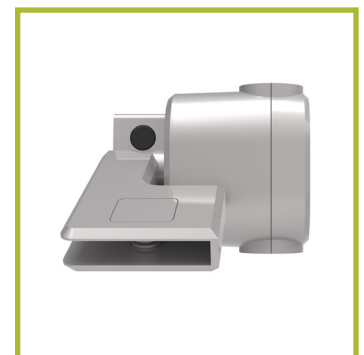
AXCES™ BRACKETS



A. Left Bracket Assembly



B. Center Bracket Assembly



C. Right Bracket Assembly

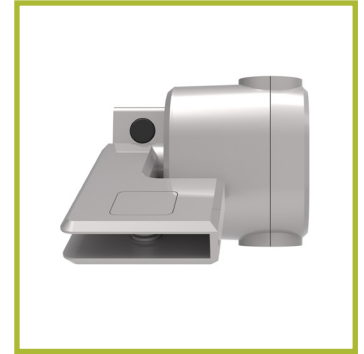
AXCES™ BRACKET ASSEMBLY AND PARTS



A. Left Bracket Assembly



B. Center Bracket Assembly



C. Right Bracket Assembly

| Location | Part # | Part Name |
|----------|--------|------------------------|
| A | 16856 | Left Bracket 0"-48" |
| | 16859 | Left Bracket 48"-66" |
| B | 16857 | Center Bracket 0"-48" |
| | 16860 | Center Bracket 48"-66" |
| C | 16855 | Right Bracket 0"-48" |
| | 16858 | Right Bracket 48"-66" |

* When ordering you **MUST** designate finish/color.

In the event your Axces product needs service or requires major repairs, contact your local installer for assistance.

If you have product questions or need to replace minor parts, contact BSI at 800.662.9595.

 BRACKET OPERATION

Glass panels can be tilted up to -5° and lowered to 22.5° . To raise glass, simply flip the glass just past vertical to rest the glass in the "up" position. To lower, gently nudge the glass to release from vertical and activate the slow close movement. The glass will return to resting, self-serve position on its own and stop.

 GLASS LIMITATIONS

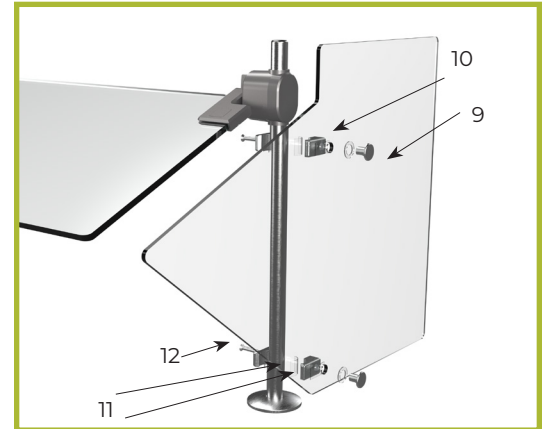
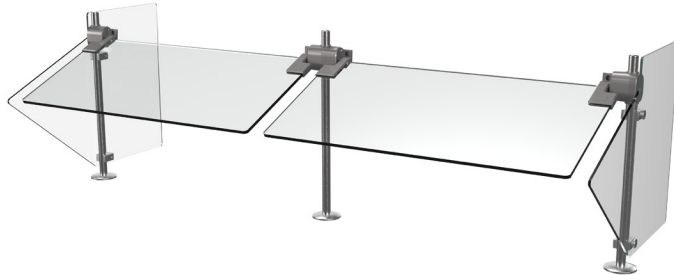
The top shelf of any Axces™ food shield is not intended to bear heavy loads. Total weight should not exceed 75 lbs. across a 36" panel of 3/8" thick glass.

 CLEANING INSTRUCTIONS

- Wipe the surface with a clean, damp cloth to remove fingerprints, dust, etc.
- Spray with a light coating of glass cleaner to remove grease and dirt. Use a non-ammonia cleaner.
- Do not use brass polish on your food guards as it will degrade the finish.
- Do not scrub the surface with abrasives like steel wool, pot scrubbers, abrasive powders, or similar products as they will remove the protective coating.
- If unit is fitted with a BSI warmer, do not clean the glass or housing when warmer is hot.
Cleaning warmer when hot can cause staining or damage to warmer finish.

NSF REQUIRED END PANELS FOR AXCES™

To meet NSF guidelines, end panels are included on all BSI quotations unless otherwise specified.



| Location | Part # | Part Name |
|----------|--------|---|
| 9 | 336 | Decorative Nut |
| 10 | 484 | Clear Mylar Spacer |
| 11 | 15756 | End Panel Bracket Assembly |
| 12 | | 1/4-20 x 1-1/4" Machine Screw Flat Phillips |

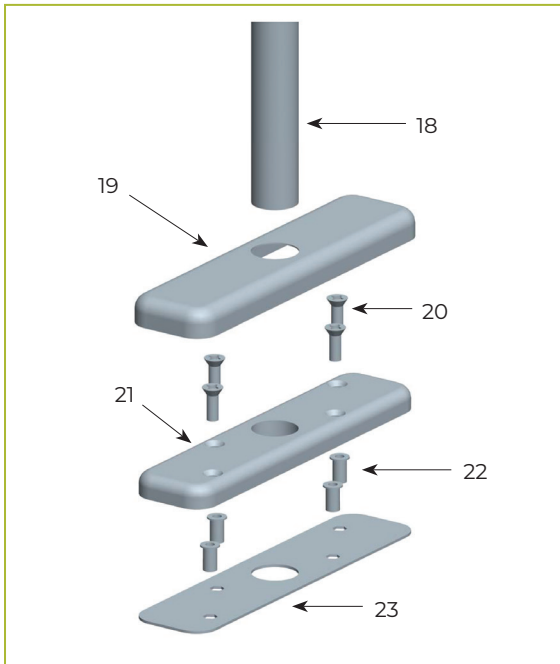
NSF End Panel Requirement Exemption

NSF/ANSI Standard 2 - 2018

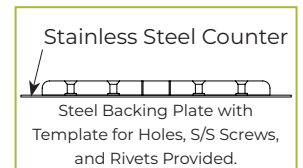
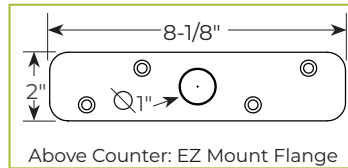
5.36.1.6.2 A food shield intended to be installed a maximum of 3 inches (76 mm) from a building wall perpendicular to the food shield is exempt from the requirements of 5.36.1.6.1 provided that the height of the building wall is not lower than the overall height of the food shield. The manufacturer's specification sheet, brochure, installation instructions, and/or shop drawings shall include these building wall and proximity requirements.

ABOVE-COUNTER INSTALLATION FOR 1" AXCES™ POSTS

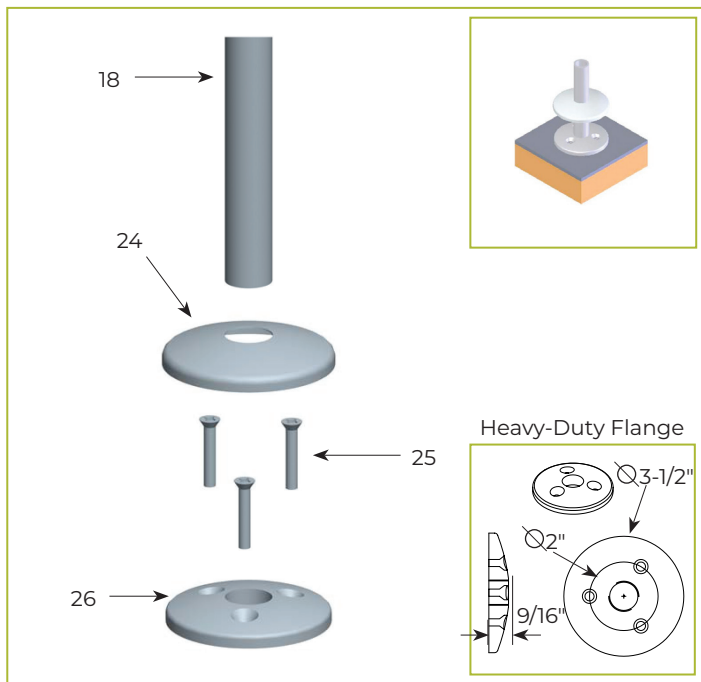
For Stainless Steel Counter
 SSI: EZ Mount 2" x 8" Flange



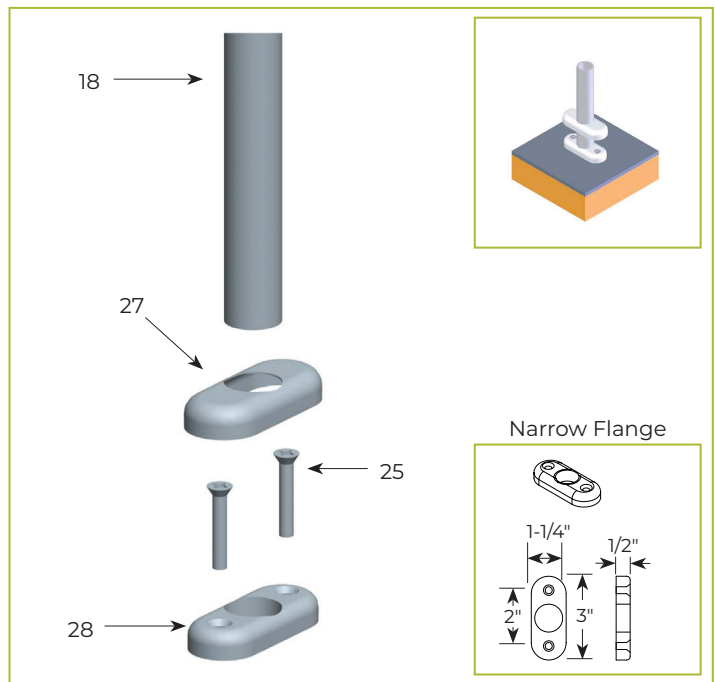
| Location | Part # | Part Name |
|----------|--------|--|
| 18 | 348 | 1" Threaded Post |
| 19 | 485 | EZ Mount Center Flange Cover |
| 20 | | 10-32 x 1" S/S Screw Flat Phillips |
| 21 | 470 | EZ Mount Base Flange Centered |
| 22 | | Rivet Nut |
| 23 | 473 | EZ Mount Flange Plate Centered |
| 24 | 464 | Heavy-Duty Flange Cover |
| 25 | | #12 x 2" A Tapping Screw Flat Phillips |
| 26 | 471 | Heavy-Duty Flange |
| 27 | 465 | Narrow Flange Cover |
| 28 | 378 | Narrow Flange |
| 29 | 442 | Grommet |



For Millwork Counter
 MW1: Heavy-Duty Flange



For Millwork Counter
 MW2: Narrow Flange

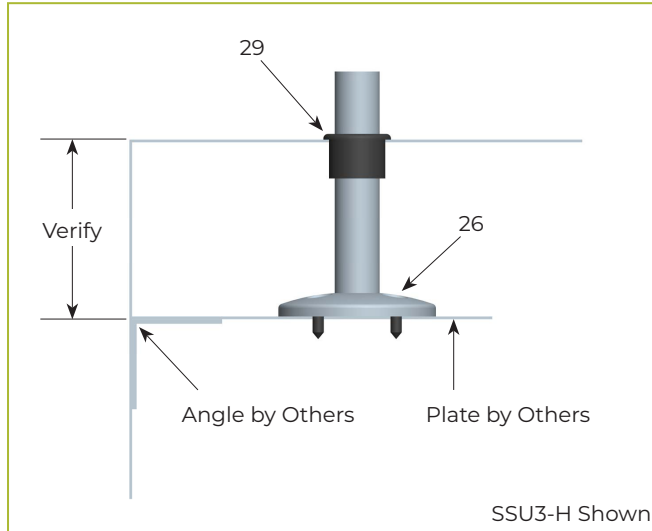


UNDER-COUNTER INSTALLATION FOR 1" AXCES™ POSTS

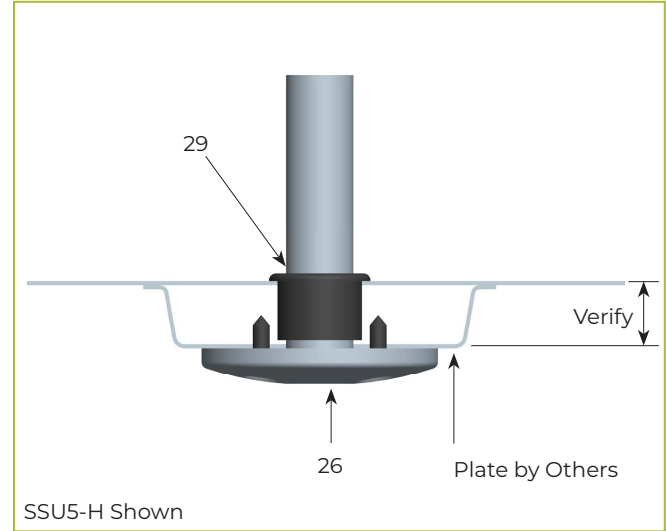
Refer to page 9 for part numbers.

Verify counter thickness or under counter installation depth in inches.

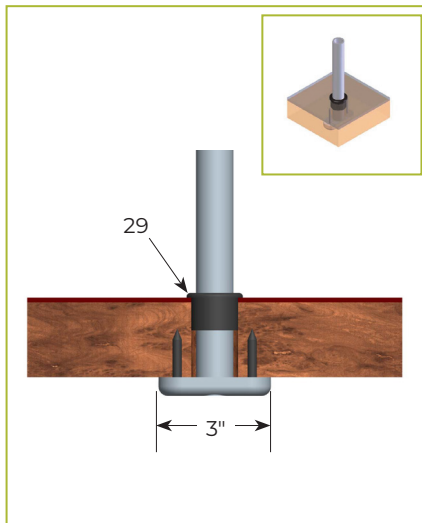
For Stainless Steel Counter
 (requires under-counter reinforcement and access)
SSU3: Heavy-Duty Flange (-H) or Narrow Flange (-N)



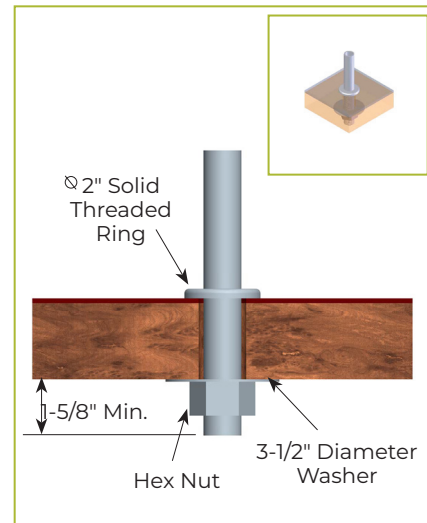
For Stainless Steel Counter
 (requires under-counter reinforcement and access)
SSU5: Heavy Duty Flange (-H) or Narrow Flange (-N)



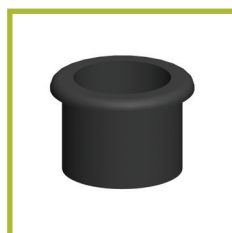
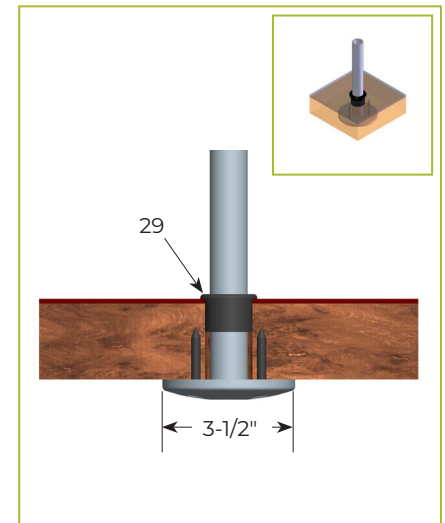
For Millwork Counter
MWU3: Narrow Flange



For Millwork Counter
MWU4: Compression Installation
 (not recommended for solid surfaces)



For Millwork Counter
MWU5: Heavy Duty Flange



For below-counter installation a 1-1/4" diameter grommet is required. (Part #442)



OWNER'S MANUAL & WARRANTY

LIGHTS & WARMERS


LIGHTS & WARMERS

Food shield systems can be built with lights, warmers, or a combination of the two. Proper maintenance for these products is very important for safety. The following pages will detail the proper methods of keeping your product clean, how and where to exchange parts, and includes diagrams for proper wiring.

RECEIVING AND INSPECTING THE EQUIPMENT

Care should be taken during unloading and uncrating to avoid equipment damage.

1. Visually inspect the package, skid, or container exterior. Any damage should be noted and reported to the delivering carrier immediately.
2. Open and inspect contents for broken glass and verify that all items were received.
3. In the event that damage is discovered, notify the carrier and request freight damage forms.
4. Request an inspection by the shipping company of the damaged equipment. This should be done within 10 days of equipment receipt.
5. Retain all crating materials until an inspection has been made or waived.
6. All packages contain a product owner's manual and warranty document, along with installation drawings for your installer.

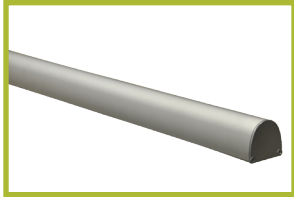


Lights and warmers must be installed in accordance with the applicable installation code by a person familiar with the product's construction, operation, and potential hazards involved.

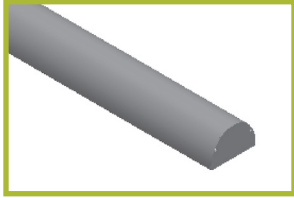
All Light and Warmer models are certified by NSF.



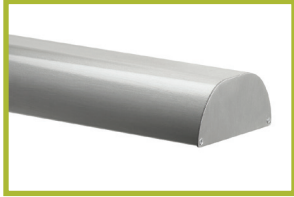
MODELS



Slimline Light Model 2580



Stealth Warmer Model 790



Stealth Warmer & Light Combo Model 705



Stealth Double Warmer & Light Combo Model 500



ALL LIGHTS, WARMERS AND COMBO UNITS ARE SHIPPED USING ZIP TIES TO SECURE UNITS DURING TRANSIT. AFTER INSTALLATION, CAREFULLY REMOVE ALL ZIP TIES.

CLEANING INSTRUCTIONS

Once your food guard has been properly installed and you have removed all zip ties, it will be important to keep your light, warmer, or combo unit clean to prolong the life of the product.

BSI recommends the following for keeping your product clean:

- Be sure to turn the power off before cleaning. Wait until Stealth warmer is cool. **Cleaning when the warmer is hot can cause staining or damage to food warmer finish.**
- Wipe the surface with a clean, damp cloth to remove fingerprints, dust, etc.
- Spray with a light coating of glass cleaner to remove grease or other dirt. Use a non-ammonia cleaner.
- Be sure not to spray any cleaning product directly into the bulbs, fixtures, or heating elements.

IDENTIFYING YOUR PRODUCT

Each BSI light, warmer, or combo unit contains an identification sticker. This sticker provides the customer with the following information:

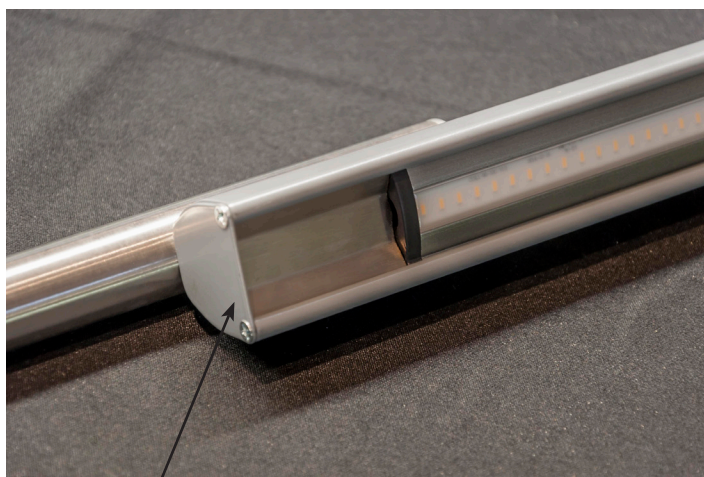
- Serial Number
- Model Number
- Manufacture Date
- Electrical Information



CHANGING THE LED BULB

When a LED bulb burns out and needs to be replaced you will need to do the following:

- Turn off power to all lights and warmers.
- Carefully unscrew the end plate and slide out the entire LED light.
- If multiple lights are connected to each other, carefully disconnect serial connector or power connector.
- Once dead light bulb is removed, replace with new LED light. Carefully reconnect the connector and slide in the light bar.
- Replace end cover and two screws.



End Plate

LED LIGHTS

| Part # | Description |
|--------|-------------------------------------|
| 16289 | Kelly LED:_12" _LED_Light_Bar |
| 16290 | Kelly LED:_18" _LED_Light_Bar |
| 16292 | Kelly LED:_36" _LED_Light_Bar |
| 16505 | Kelly LED:_48" _LED_Light_Bar |
| 16293 | Kelly LED:_10' _Power_Cord_w/o_Plug |
| 16294 | Kelly LED:_Serial_Connector |
| 16295 | Kelly LED:_6" Power_Connector |

REPLACING THE TUBULAR HEATING ELEMENTS

On all three Stealth warmer units, the tubular heating element can burn out — similar to a light bulb.

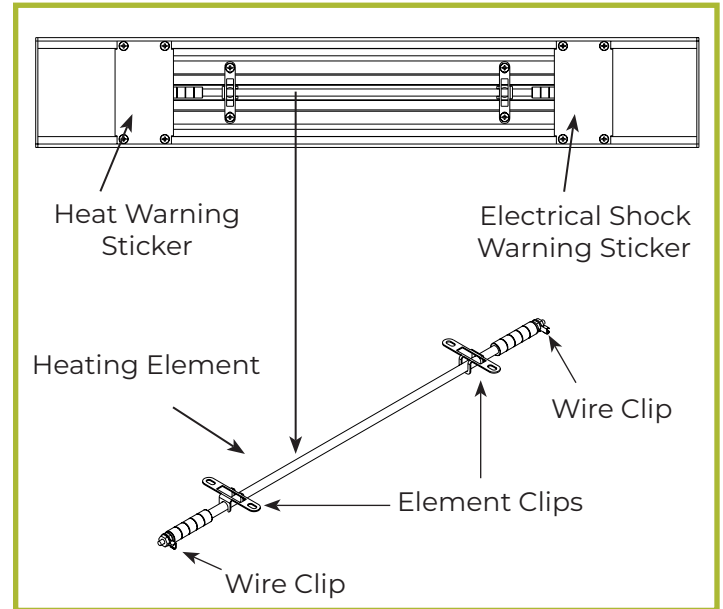
Replacement should be done by a professional service technician. If you have additional questions, contact BSI at 1.800.662.9595.

HEATING ELEMENTS

| Part # | Description |
|-----------|--------------------------------|
| 492-18-BK | Element:_18"_120V_Heater_350W |
| 492-24-BK | Element:_24"_120V_Heater_500W |
| 492-30-BK | Element:_30"_120V_Heater_660W |
| 492-36-BK | Element:_36"_120V_Heater_800W |
| 492-42-BK | Element:_42"_120V_Heater_950W |
| 492-48-BK | Element:_48"_120V_Heater_1100W |
| 492-54-BK | Element:_54"_120V_Heater_1250W |
| 492-60-BK | Element:_60"_120V_Heater_1400W |
| 492-66-BK | Element:_66"_120V_Heater_1560W |

| Part # | Description |
|-----------|--------------------------------|
| 496-24-BK | Element:_24"_208V_Heater_500W |
| 496-30-BK | Element:_30"_208V_Heater_660W |
| 496-36-BK | Element:_36"_208V_Heater_800W |
| 496-42-BK | Element:_42"_208V_Heater_950W |
| 496-48-BK | Element:_48"_208V_Heater_1100W |
| 496-54-BK | Element:_54"_208V_Heater_1250W |
| 496-60-BK | Element:_60"_208V_Heater_1400W |
| 496-66-BK | Element:_66"_208V_Heater_1560W |

240V Heat Elements are a special order item. Contact BSI at 1.800.662.9595 to order.



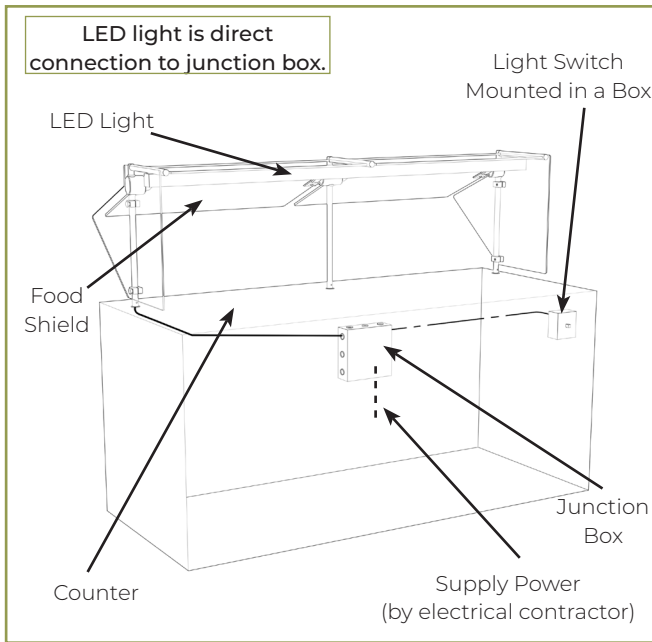
PARTS & SERVICE

In the event your lights or warmers require major repairs, contact your local installer for assistance.

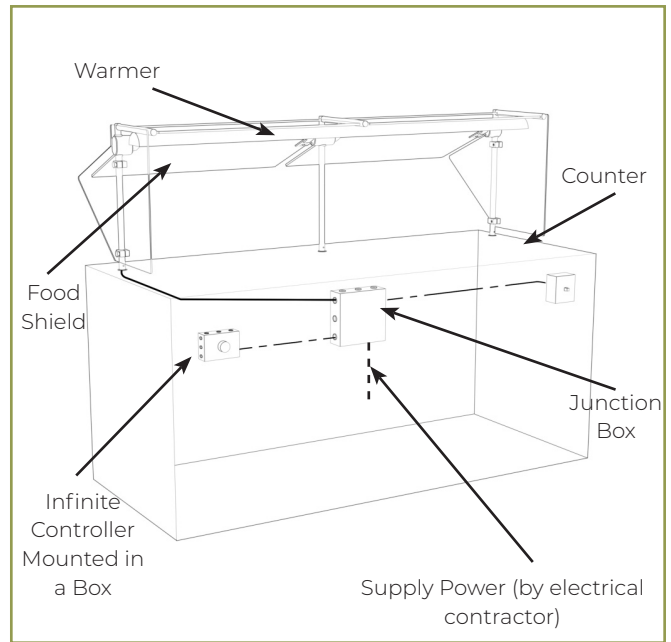
If you have product questions or need minor replacement parts, contact BSI at 1.800.662.9595.

WIRING INSTALLATIONS

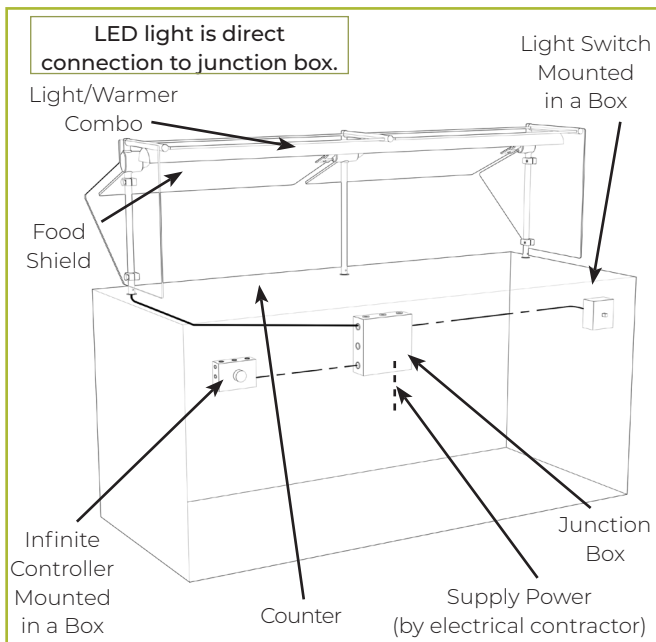
Slimline 2580 LED Light



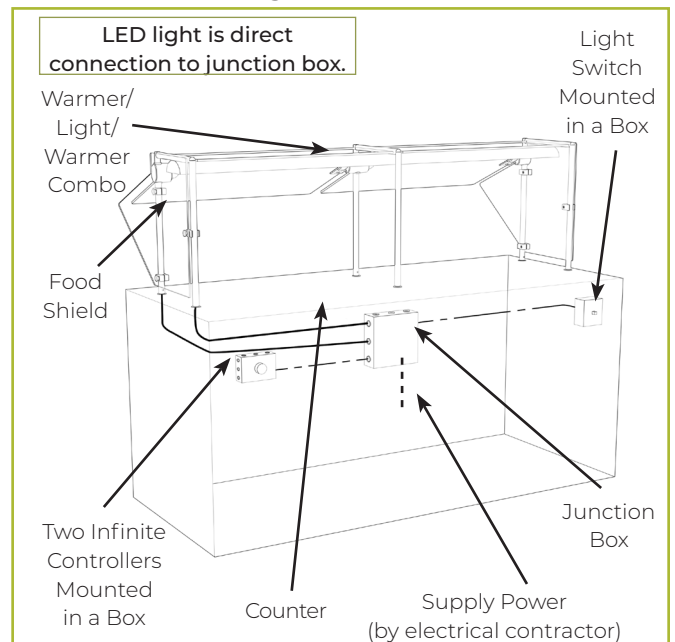
Stealth 790 Warmer



Stealth 705 LED Light & Warmer Combo



Stealth Warmer/Light/Warmer Combo Unit

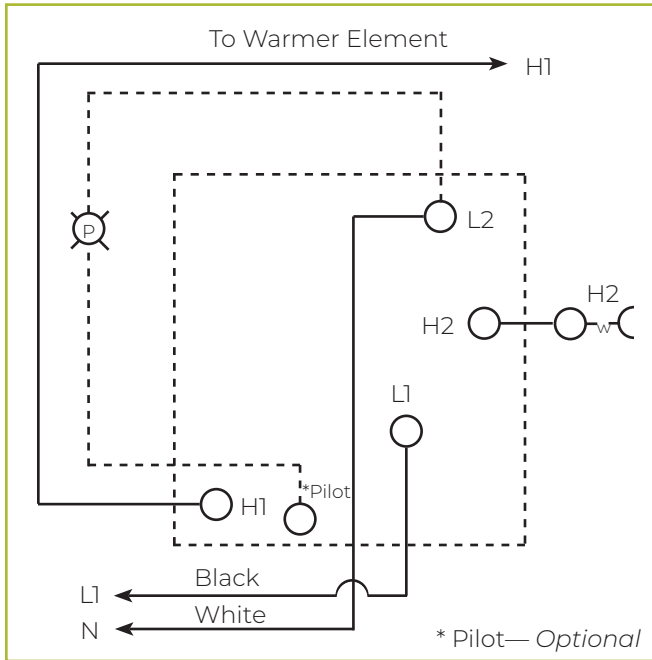


Installation Information

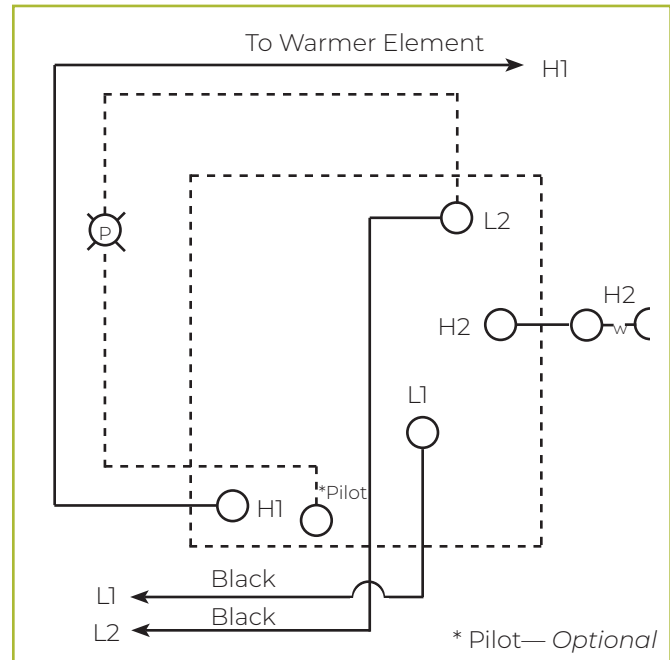
- All wiring should be performed by a certified technician.
- Wires are routed through wire chase/support legs per approved shop drawings.
- Mount the infinite controllers near the wire chase/support leg.
- The infinite controllers, light switch, and six feet of conduit/wiring exiting support legs are provided with all BSI lights & warmers.

WIRING DIAGRAMS

Remote Infinite Control for Stealth Warmer/Combo Units



Infinite switch (120V) - Part #581



Infinite switch (208V/240V) - Part #582

BSI, LLC WARRANTY

BSI, LLC warrants its products to be free of material and workmanship defects under normal use from the date of original purchase and for the applicable warranty periods set forth below. BSI, LLC's warranty extends only to original purchasers acquiring new products purchased in the United States directly from BSI, LLC, its authorized dealers, or other companies specifically authorized by BSI, LLC to act as resellers of its products.

AXCES™

BSI, LLC warrants the Axces system against material and workmanship defects for a period of two years from invoice date. This excludes post-installation glass chipping or breakage that can be explained as "standard wear and tear."

STEALTH WARMERS

BSI, LLC warrants the Stealth housing and warming element against material and workmanship defects for a period of two years from invoice date.

SLIMLINE LED LIGHT

The Slimline LED light warranty covers the ballast for material and workmanship for a period of two years from invoice date. The LED bulb itself is not covered under warranty.

THERE ARE NO WARRANTIES EXCEPT AS STATED ABOVE, WHETHER EXPRESSED OR IMPLIED, INCLUDING, BUT NOT LIMITED TO, ANY WARRANTY OF MERCHANTABILITY OR FITNESS FOR A PARTICULAR PURPOSE. Warranties do not apply to products that have been altered in any way or to products subjected to misuse, abuse, neglect, accident, or damage in transit. Warranty is void if products are used, held, or stored in an unsupervised environment. BSI, LLC's liability shall be limited to product repair or replacement, or refund of purchase price issued at the discretion of BSI, LLC. BSI, LLC will not be liable, under any circumstances, for incidental or consequential damages (including, without limitation, to lost profits) arising in connection with the sale, use, inability to use, repair, or replacement of BSI, LLC's products. The liability of BSI, LLC arising from any cause shall not exceed the price paid for the products.

Any breach claim of the foregoing warranties shall be deemed waived unless submitted to BSI, LLC in writing within 30 days of alleged defect discovery date or by reasonable inspection should have been discovered. Merchandise must be returned to the BSI, LLC factory, freight prepaid, and will not be accepted unless a prior Return Merchandise Authorization (RMA) has been issued by BSI, LLC. A copy of the original invoice must accompany the returned merchandise to verify the original purchase date and warranty entitlement. Any cause of action for breach of the foregoing warranties shall be deemed waived unless brought within one year of claim submission.