

## QUICK REFERENCE GUIDE



CV100-1



CV100-2



CV100-3



CV100-4



CV100-5



CV100-6

## GENERAL INFORMATION

Project Name: \_\_\_\_\_

Item: \_\_\_\_\_

Quantity: \_\_\_\_\_

Model: CV100-1 \_\_\_\_\_

Length: \_\_\_\_\_

## OPTIONS AND ACCESSORIES

### GLASS OPTIONS

- 3/8" Tempered Glass - Overall Max 66"
- 1/2" Tempered Glass - Centerline Max 72"

### INSTALLATION OPTIONS

- Square Glass Clips (Secured to Counter)
- Round Glass Clips (Secured to Counter)
- Flush to Counter, Sealed with Silicone
- Custom Clamp (Secured to Counter)

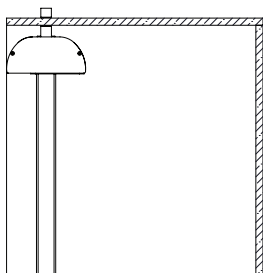
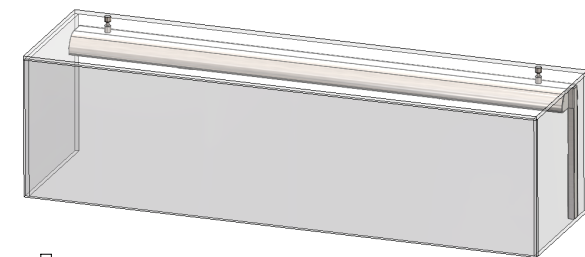
### LIGHT AND WARMER OPTIONS

*Light and warmer housings can be installed as stand alone units or mounted to the top glass.*

- Slimline 2580 Light-Only Unit
- Stealth 790 Heat-Only Unit
- Stealth 705 Light & Warmer Combo Unit

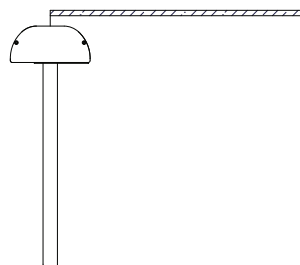
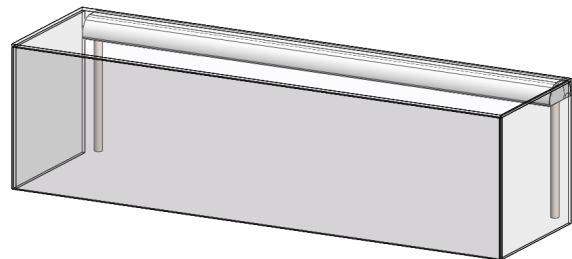
## INSTALLATION METHODS

Light & Warmer Glass Mounted Configuration



Side Profile

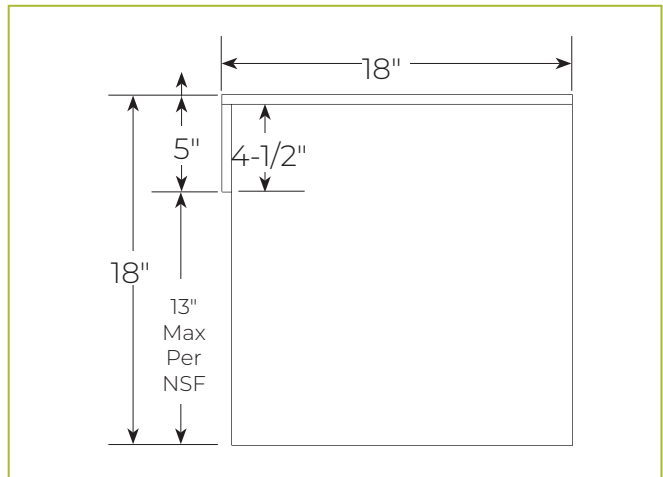
Light & Warmer Stand Alone Configuration



Side Profile

## CV100-1

*ClearView Bonded Glass,  
Self Service w/ Top Shelf*



## GENERAL INFORMATION

Project Name: \_\_\_\_\_

Item: \_\_\_\_\_

Quantity: \_\_\_\_\_

Model: CV100-2

Length: \_\_\_\_\_

## OPTIONS AND ACCESSORIES

### GLASS OPTIONS

- 3/8" Tempered Glass - Overall Max 66"
- 1/2" Tempered Glass - Centerline Max 72"

### INSTALLATION OPTIONS

- Square Glass Clips (Secured to Counter)
- Round Glass Clips (Secured to Counter)
- Flush to Counter, Sealed with Silicone
- Custom Clamp (Secured to Counter)

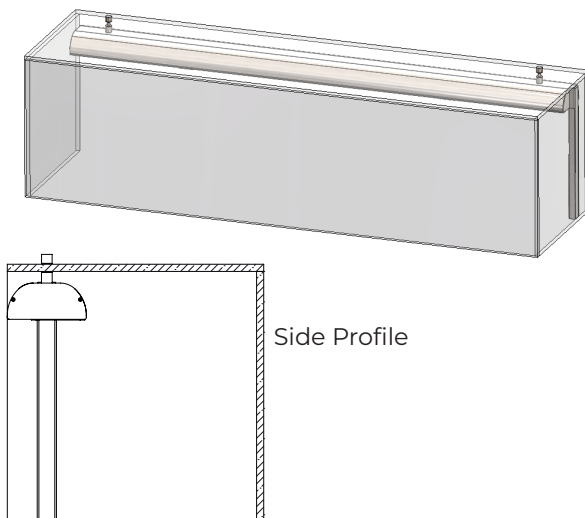
### LIGHT AND WARMER OPTIONS

*Light and warmer housings can be installed as stand alone units or mounted to the top glass.*

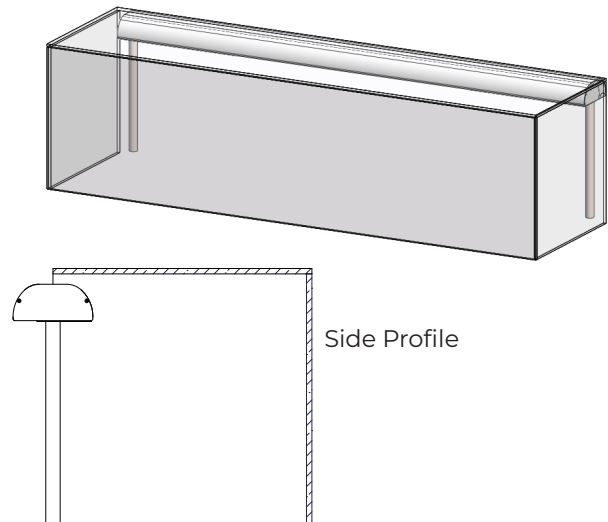
- Slimline 2580 Light-Only Unit
- Stealth 790 Heat-Only Unit
- Stealth 705 Light & Warmer Combo Unit

## INSTALLATION METHODS

Light & Warmer Glass Mounted Configuration

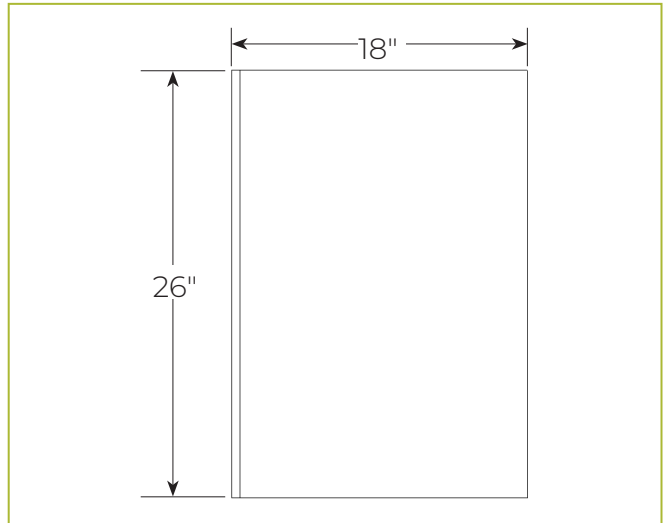


Light & Warmer Stand Alone Configuration



## CV100-2

Bonded Glass, Full Service



Approval Drawings Required  
Specifications subject to change without notice.



09.24

## GENERAL INFORMATION

Project Name: \_\_\_\_\_

Item: \_\_\_\_\_

Quantity: \_\_\_\_\_

Model: CV100-3 \_\_\_\_\_

Length: \_\_\_\_\_

## CV100-3

*ClearView Bonded Glass, Full Service w/ Top Shelf*



## OPTIONS AND ACCESSORIES

### GLASS OPTIONS

- 3/8" Tempered Glass - Overall Max 66"
- 1/2" Tempered Glass - Centerline Max 72"

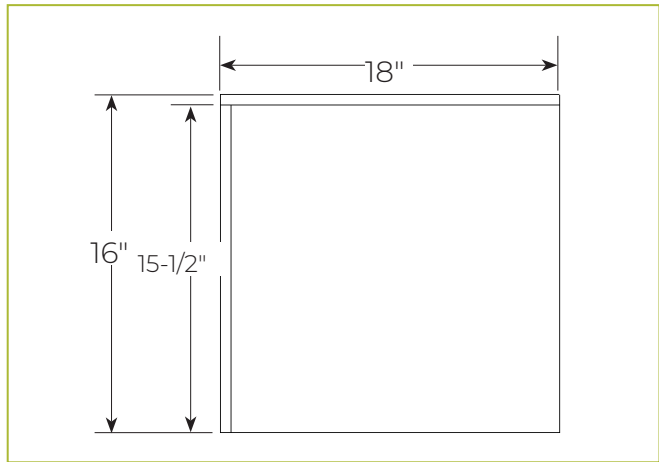
### LIGHT AND WARMER OPTIONS

*Light and warmer housings can be installed as stand alone units or mounted to the top glass.*

- Slimline 2580 Light-Only Unit
- Stealth 790 Heat-Only Unit
- Stealth 705 Light & Warmer Combo Unit

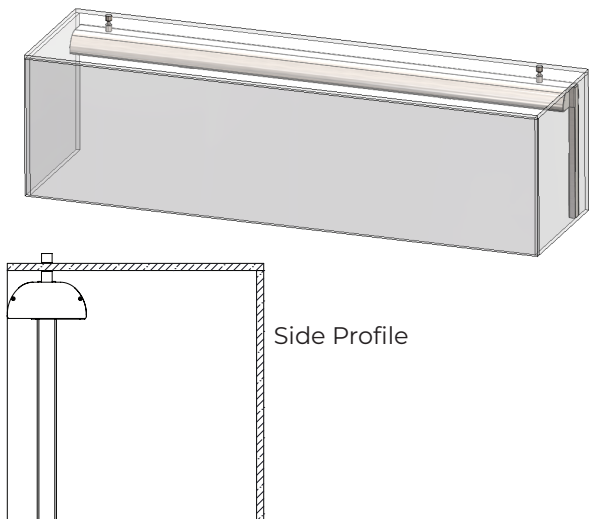
### INSTALLATION OPTIONS

- Square Glass Clips (Secured to Counter)
- Round Glass Clips (Secured to Counter)
- Flush to Counter, Sealed with Silicone
- Custom Clamp (Secured to Counter)

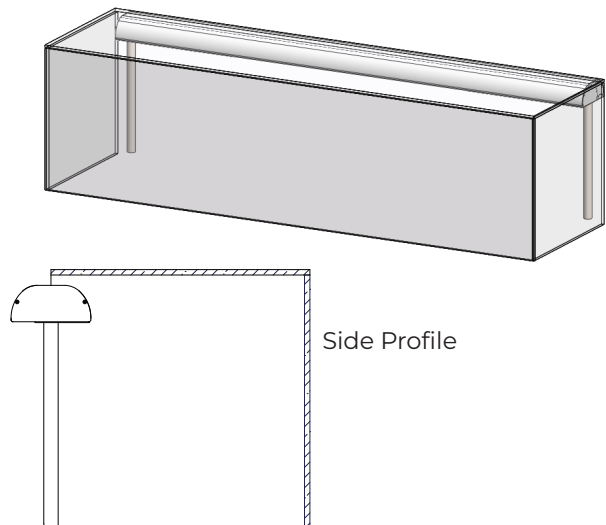


## INSTALLATION METHODS

Light & Warmer Glass Mounted Configuration



Light & Warmer Stand Alone Configuration



Approval Drawings Required  
 Specifications subject to change without notice.



09.24

## GENERAL INFORMATION

Project Name: \_\_\_\_\_

Item: \_\_\_\_\_

Quantity: \_\_\_\_\_

Model: CV100-4 \_\_\_\_\_

Length: \_\_\_\_\_

## OPTIONS AND ACCESSORIES

### GLASS OPTIONS

- 3/8" Tempered Glass - Overall Max 66"
- 1/2" Tempered Glass - Centerline Max 72"

### LIGHT AND WARMER OPTIONS

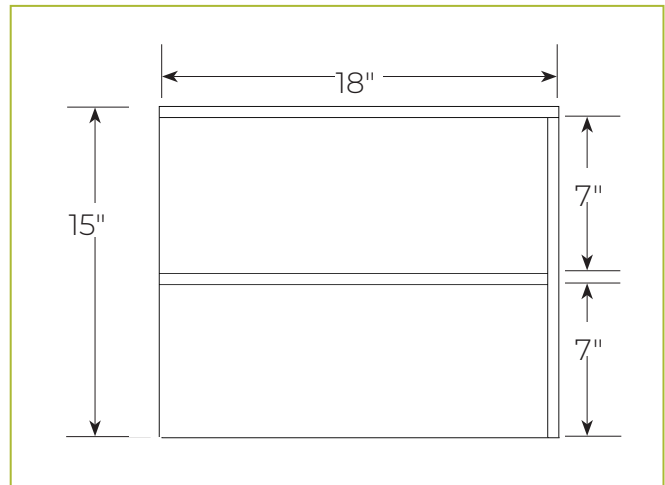
*Light and warmer housings can be added with alterations to the shelving height. Contact BSI for details.*

### INSTALLATION OPTIONS

- Square Glass Clips (Secured to Counter)
- Round Glass Clips (Secured to Counter)
- Flush to Counter, Sealed with Silicone
- Custom Clamp (Secured to Counter)

## CV100-4

**ClearView Bonded Glass, Two-Tier Full Service w/ Top Shelf**



*Shown with a closed front and open back. Also available with open front and back for self service applications.*

## GENERAL INFORMATION

Project Name: \_\_\_\_\_

Item: \_\_\_\_\_

Quantity: \_\_\_\_\_

Model: CV100-5 \_\_\_\_\_

Length: \_\_\_\_\_

## OPTIONS AND ACCESSORIES

### GLASS OPTIONS

- 3/8" Tempered Glass - Overall Max 66"
- 1/2" Tempered Glass - Centerline Max 72"

### LIGHT AND WARMER OPTIONS

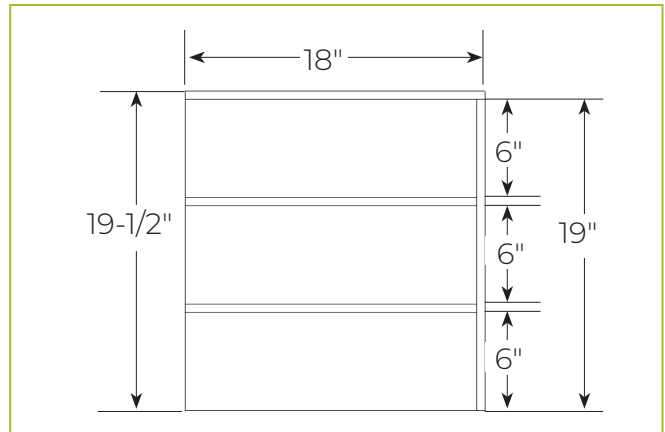
Light and warmer housings can be added with alterations to the shelving height. Contact BSI for details.

### INSTALLATION OPTIONS

- Square Glass Clips (Secured to Counter)
- Round Glass Clips (Secured to Counter)
- Flush to Counter, Sealed with Silicone
- Custom Clamp (Secured to Counter)

## CV100-5

ClearView Bonded Glass, Three-Tier Full Service w/ Top Shelf



Shown with closed front and open back. Also available with open front and back for self service applications.

## GENERAL INFORMATION

Project Name: \_\_\_\_\_

Item: \_\_\_\_\_

Quantity: \_\_\_\_\_

Model: CV100-6

Length: \_\_\_\_\_

## OPTIONS AND ACCESSORIES

### GLASS OPTIONS

- 3/8" Tempered Glass - Overall Max 66"
- 1/2" Tempered Glass - Centerline Max 72"

### INSTALLATION OPTIONS

- Square Glass Clips (Secured to Counter)
- Round Glass Clips (Secured to Counter)
- Flush to Counter, Sealed with Silicone
- Custom Clamp (Secured to Counter)

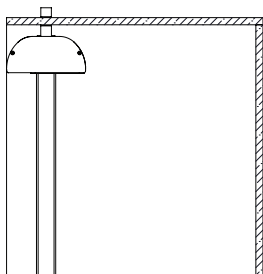
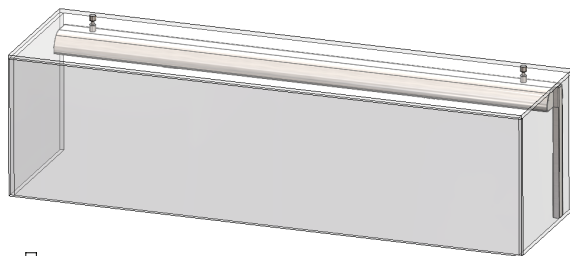
### LIGHT AND WARMER OPTIONS

Light and warmer housings can be installed as stand alone units or mounted to the top glass.

- Slimline 2580 Light-Only Unit
- Stealth 790 Heat-Only Unit
- Stealth 705 Light & Warmer Combo Unit

## INSTALLATION METHODS

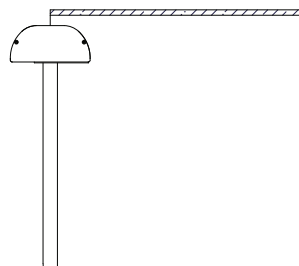
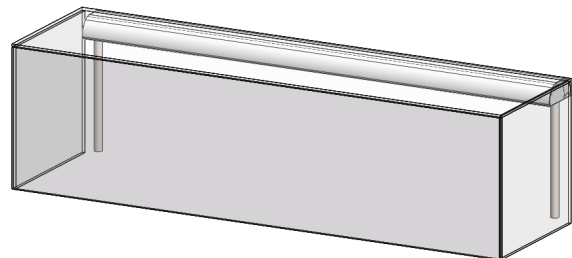
Light & Warmer Glass Mounted Configuration



Side Profile

Approval Drawings Required  
Specifications subject to change without notice.

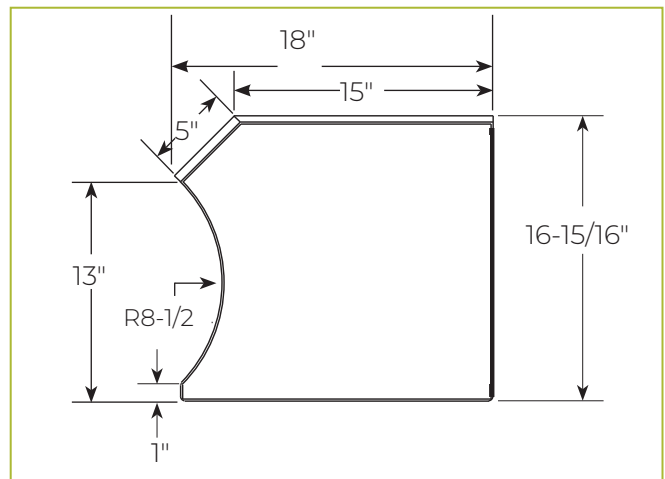
Light & Warmer Stand Alone Configuration



Side Profile

## CV100-6

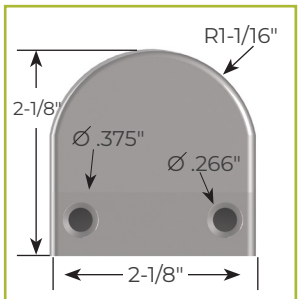
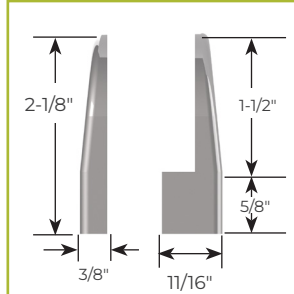
ClearView Bonded Glass, Curved Front  
Self Service w/ Top Shelf



## MOUNTING OPTIONS

### 3/8" ROUND CLIP

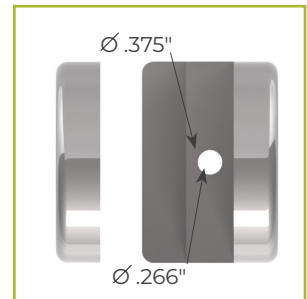
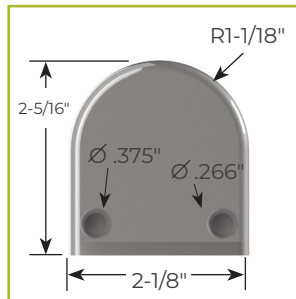
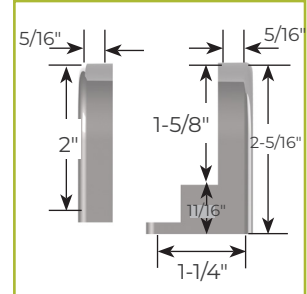
#16159 Satin Stainless  
#16604 Polished Stainless



1/4-20 x .62 Long Flat Head  
(Hex) Machine Screws Provided

### 1/2" ROUND CLIP

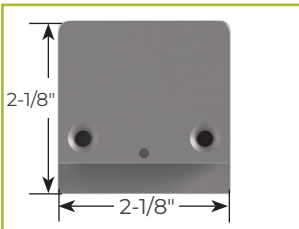
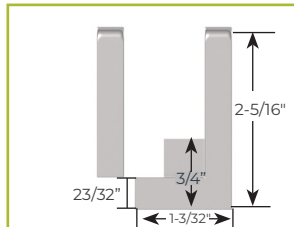
#16266-A Satin Stainless  
#16266 Polished Stainless



1/4-20 x .62 Long Flat Head  
(Hex) Machine Screws Provided

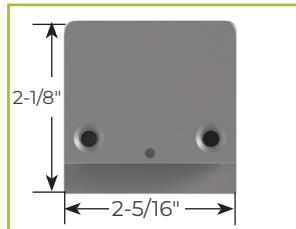
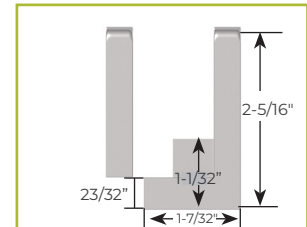
### 3/8" SQUARE CLIPS

#16754 Satin Stainless



### 1/2" SQUARE CLIPS

#16471 Satin Stainless

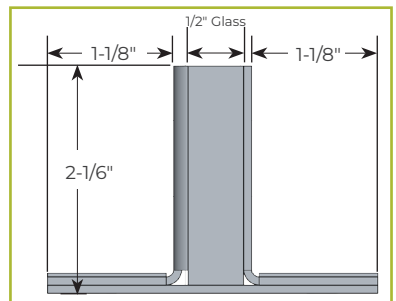
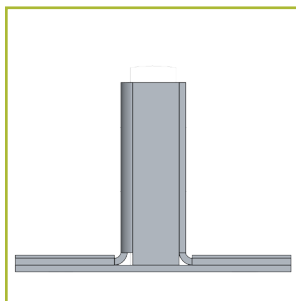


### FLUSH TO COUNTER, SEALED WITH SILICONE



© BSI, LLC 2016

### CUSTOM CLAMP (SECURED TO COUNTER)



Specifications subject to change without notice.

09.24



# LIMITATIONS AND CONSIDERATIONS WHEN ORDERING BSI'S CLEARVIEW FOOD SHIELDS

---

## DESIGN LIMITATIONS

- Each section should be designed with enough stability to stand on its own.
- Glass edges are flat and should be bonded at a 90° angle for optimal adhesion.
- Enclosed ClearView models can limit "breathability" and cause steam or condensation to build up.
- ClearView food guards cannot hold water.

## CONSTRUCTION LIMITATIONS

- Straight glass tolerances:
  - 1/2" thickness = +/- 1/8" per span
  - 3/8" thickness = +/- 3/32" per span
- Glass thickness and maximum spans:
  - 3/8" thickness - outside max is 66"
  - 1/2" thickness - centerline max is 72"
  - For longer spans, contact BSI headquarters.
- Curved glass is also available and features higher tolerances than straight glass.

## GLASS WEIGHTS

- 3/8" thickness = 4.19 lb. per square foot
- 1/2" thickness = 6.5 lb. per square foot

## SHIPPING & CHIPPING

- Special handling and extra padding are required for ClearView shipments.
- If glass is chipped, the entire unit must be replaced.