

DESCRIPTION

The ClearView food shield is manufactured by BSI, LLC. Glass is UV bonded creating a secure, clean seam without noticeable adhesive joints.

CLEARVIEW INSTALLATION OPTIONS

- Installed with Glass Clips (secured to counter)
- Flush to counter. Sealed with 3M Glue.
- Flush to counter. Sealed with silicone.
- Installed with Glass Railing (secured to counter)
- Routed into counter at 1/2" depth (into stone voids warranty)
- Custom Clamp (secured to counter)

Things to Know

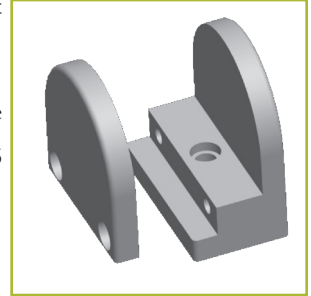
- Silicone and 3M Glue will adhere to all materials.
- Silicone can be messy.
- Vertical partitions must use clips.

Lights and Warmers

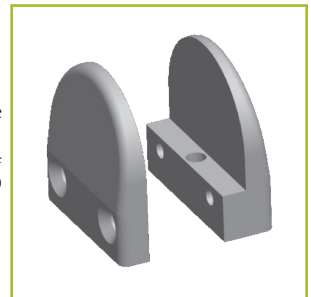
- Stainless steel housing to hold light, warmer, light/heat combo or heat/light/heat combo.
- Housing is under-counter mounted.
- Housing sits 1" away from all glass.

Stainless Steel Glass Clip Panel Mount

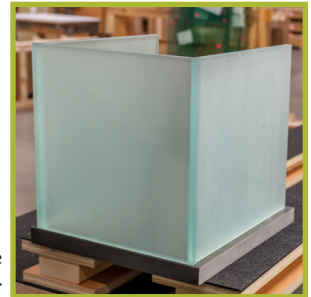
Flat Base For 1/2" Panel, Round Type
 Chrome Clip Model #16266
 Brushed Satin Clip Model #16581



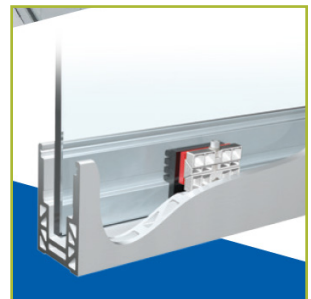
Flat Base For 3/8" Panel, Round Type
 Chrome Clip Model #16604
 Brushed Satin Clip Model #16159



3M Glue & Silicone
 Flush to counter



Panel Grip 2 Railing System
 Aluminum base shoe molding



Custom Clamp
 Stainless steel clamp secured to counter

