



OWNER'S MANUAL & WARRANTY

LIGHTS & WARMERS

LIGHTS & WARMERS

Food shield systems can be built with lights, warmers or a combination of the two. Proper maintenance for these products is very important for safety. The following pages will detail the proper methods of keeping your product clean, how and where to exchange parts, and include diagrams for proper wiring.

RECEIVING AND INSPECTING THE EQUIPMENT

Even though most equipment is shipped crated, care should be taken during unloading so the equipment is not damaged while being moved into your facility.

1. Visually inspect the exterior of the package and skid or container. Any damage should be noted and reported to the delivering carrier immediately.
2. If damaged, open and inspect the contents with the carrier.
3. In the event that the exterior is not damaged, yet, upon opening, there is concealed damage to the equipment, notify the carrier. Notification should be made verbally as well as in written form.
4. Request an inspection by the shipping company of the damaged equipment. This should be done within 10 days from receipt of the equipment.
5. Be sure to check that there is no broken glass.
6. Be sure to check that all materials are received.
7. Freight carriers can supply the necessary damage forms upon request.
8. Retain all crating materials until an inspection has been made or waived.
9. All packages contain drawings for your installer.
10. All Light and Warmer packages contain this Owner's Manual and Warranty.



ALL LIGHTS, WARMERS AND COMBO UNITS ARE SHIPPED USING ZIP TIES TO SECURE UNITS DURING TRANSIT. AFTER INSTALLATION, CAREFULLY REMOVE ALL ZIP TIES.

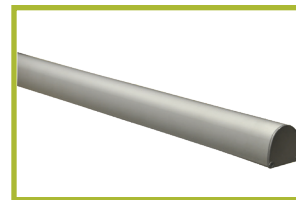


This product must be installed in accordance with the applicable installation code by a person familiar with the construction and operation of the product and the hazards involved.

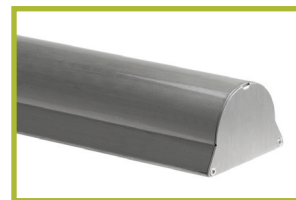
All Light and Warmer models are certified by NSF.



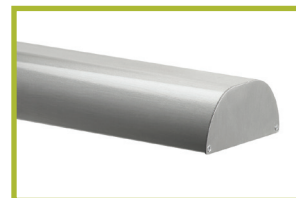
MODELS



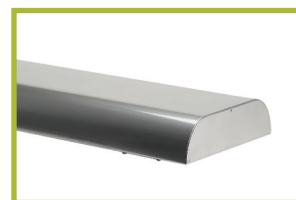
Slimline Light Model 2580



Stealth Warmer Model 490



Stealth Warmer & Light Combo Model 605



Stealth Double Warmer & Light Combo Model 500

CLEANING INSTRUCTIONS

Once your Food Shield has been properly installed and you have removed all zip ties from transportation, it will be important to keep your light, warmer or combo unit clean to prolong the life of the product.

BSI recommends the following for keeping your product clean:

- Be sure to turn the power on your light or warmer off before cleaning. Only clean when stealth warmer is cool. **Cleaning when the warmer is hot can cause staining or damage to food warmer finish.**
- Wipe the surface with a clean, damp cloth to remove fingerprints, dust, etc.
- Spray with a light coating of glass cleaner to remove grease or other dirt. Use a non-ammonia cleaner.
- Be sure not to spray any cleaning product directly into the bulbs, fixtures or heating elements.

IDENTIFYING YOUR PRODUCT

Each BSI light, warmer or combo unit contains an Identification Sticker. This sticker provides the customer with the following information:

- Serial Number
- Model Number
- Manufacture Date
- Electrical Information

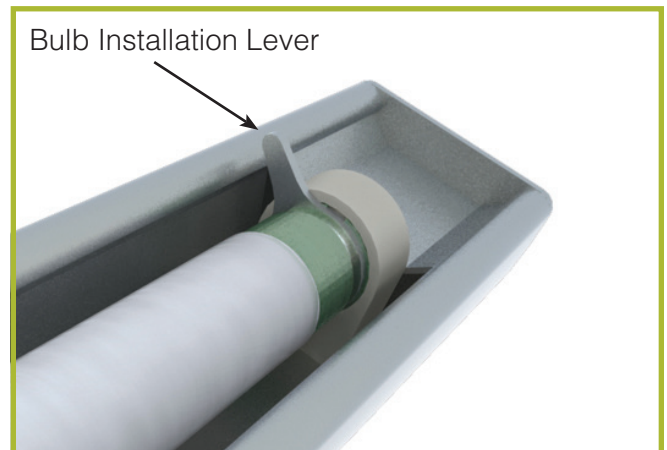
Sample Stealth Warmer Sticker with everything you need to know about your unit.



CHANGING THE FLUORESCENT BULB

When a fluorescent bulb burns out and needs to be replaced you will need to do the following:

- Turn off power to all lights and warmers.
- Carefully push the white lever to the opposite side, rotating the bulb 90°.
- Rotating the lever will unlock the bulb. The pins will now be visible through the open slots at each end. Caution: At this position, bulbs are free to fall down through open slots.
- If the bulb does not easily slide out from the holders, tap lightly on housing first, then carefully use needle-nose pliers to grab the bulb, evenly pulling it down and out.
- Once the defective bulb is removed, remove the white lever end cap from the bulb prongs and proceed to place it on the new bulb prongs.
- With the new bulb in hand, evenly push the pins on both ends up and into the open slots of the lamp holders.
- Carefully push the white lever to the opposite side, rotating the bulb 90° and locking it into place. Pins will no longer be visible.

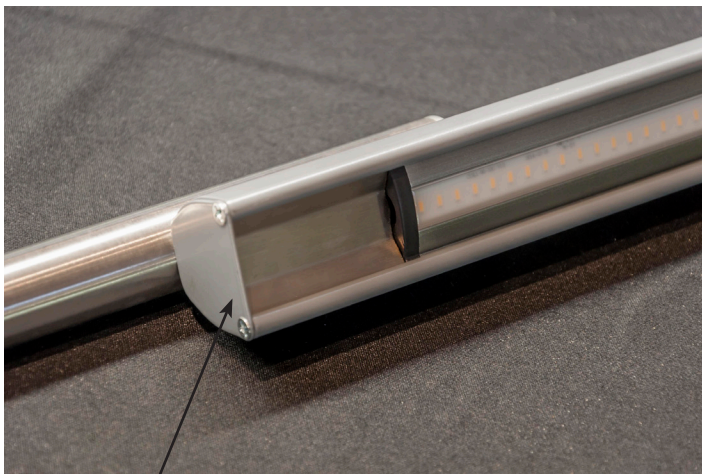


Do not use high-output bulbs.
Use coated, shatter-proof bulbs.

❖ CHANGING THE LED BULB

When a LED bulb burns out and needs to be replaced you will need to do the following:

- Turn off power to all lights and warmers.
- Carefully unscrew the end plate and slide out the entire LED light.
- If multiple lights are connected to each other carefully disconnect Serial Connector or Power Connector.
- Once dead light is removed, replace with new LED light. Carefully reconnect the connector and slide in the light bar.
- Replace end cover and the two screws.



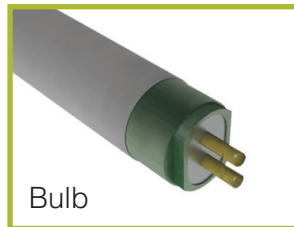
End Plate

❖ PARTS & SERVICE

In the event that your Lights or Warmers need service and require major repairs, contact your local installer for assistance.

If you have questions about the products or need to replace minor parts you may contact BSI, LLC at 1.800.662.9595.

❖ ORDERING NEW FLUORESCENT BULBS



Bulb



Bulb
Installation Lever

<i>Part #</i>	<i>Description (All bulbs 4100K)</i>
508-8-C	F8-T5/CW - 12" Long
508-14-C	F14-T5/CW - 22" Long
508-21-C	F21-T5/CW - 34" Long
508-28-C	F28-T5/CW - 46" Long
508-35-C	F35-T5/CW - 58" Long
512	Bulb Installation Lever

❖ ORDERING NEW LED LIGHTS

<i>Part #</i>	<i>Description</i>
16289	Kelly LED:_12"_LED_Light_Bar
16290	Kelly LED:_18"_LED_Light_Bar
16292	Kelly LED:_36"_LED_Light_Bar
16505	Kelly LED:_48"_LED_Light_Bar
16293	Kelly LED:_10'_Power_Cord_w/o_Plug
16294	Kelly LED:_Serial_Connector
16295	Kelly LED:_6" Power_Connector

REPLACING THE TUBULAR HEATING ELEMENTS

On all three Stealth Warmer units the tubular heating element can burn out, similar to a light bulb.

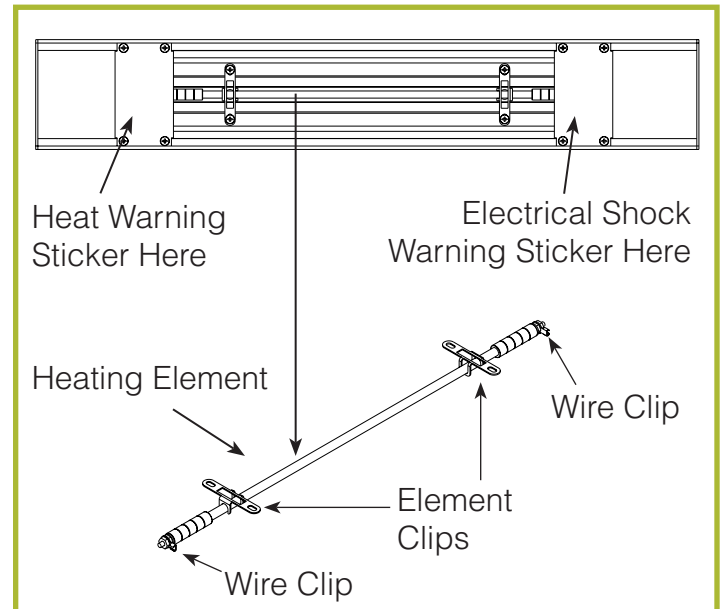
Replacing the tubular heating element should be completed by a Professional Service Technician. If you have additional questions please contact BSI at 1.800.662.9595.

ORDERING NEW HEATING ELEMENTS

Part #	Description
492-18-BK	Element:_18"_120V_Heater_350W
492-24-BK	Element:_24"_120V_Heater_500W
492-30-BK	Element:_30"_120V_Heater_660W
492-36-BK	Element:_36"_120V_Heater_800W
492-42-BK	Element:_42"_120V_Heater_950W
492-48-BK	Element:_48"_120V_Heater_1100W
492-54-BK	Element:_54"_120V_Heater_1250W
492-60-BK	Element:_60"_120V_Heater_1400W
492-66-BK	Element:_66"_120V_Heater_1560W

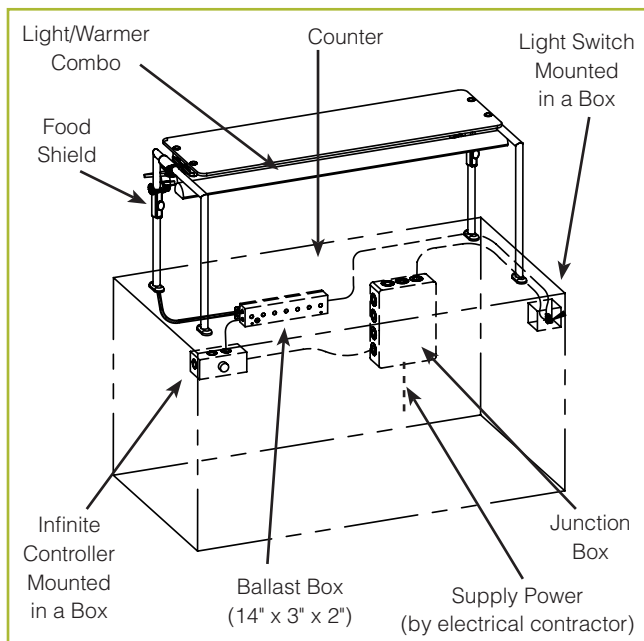
Part #	Description
496-24-BK	Element:_24"_208V_Heater_500W
496-30-BK	Element:_30"_208V_Heater_660W
496-36-BK	Element:_36"_208V_Heater_800W
496-42-BK	Element:_42"_208V_Heater_950W
496-48-BK	Element:_48"_208V_Heater_1100W
496-54-BK	Element:_54"_208V_Heater_1250W
496-60-BK	Element:_60"_208V_Heater_1400W
496-66-BK	Element:_66"_208V_Heater_1560W

240V Heat Elements are a Special Order Item. Contact BSI at 1.800.662.9595 to place an order.

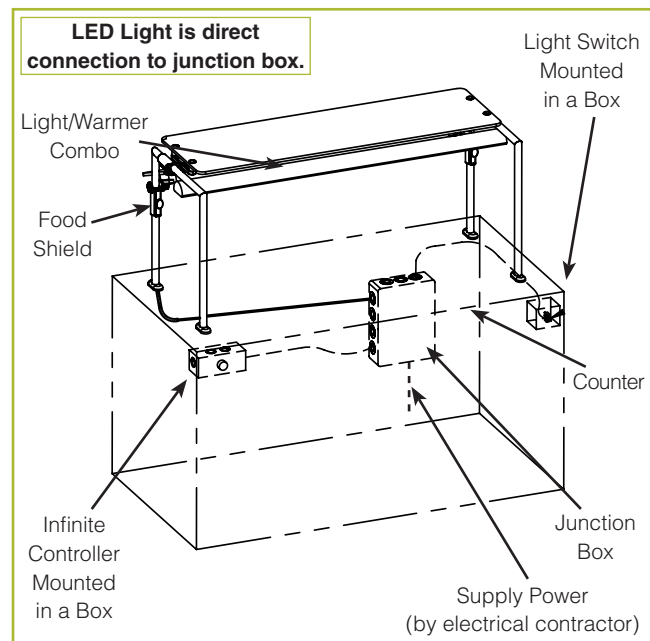


WIRING INSTALLATIONS

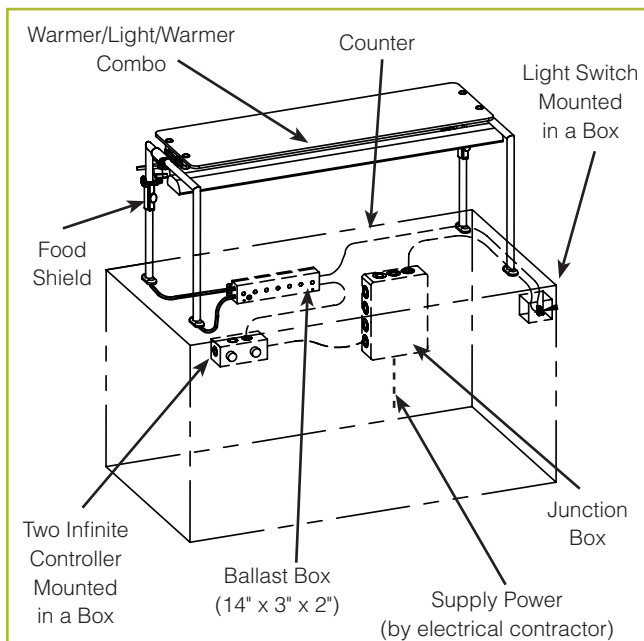
Fluorescent Light/Stealth™ Warmer Combo



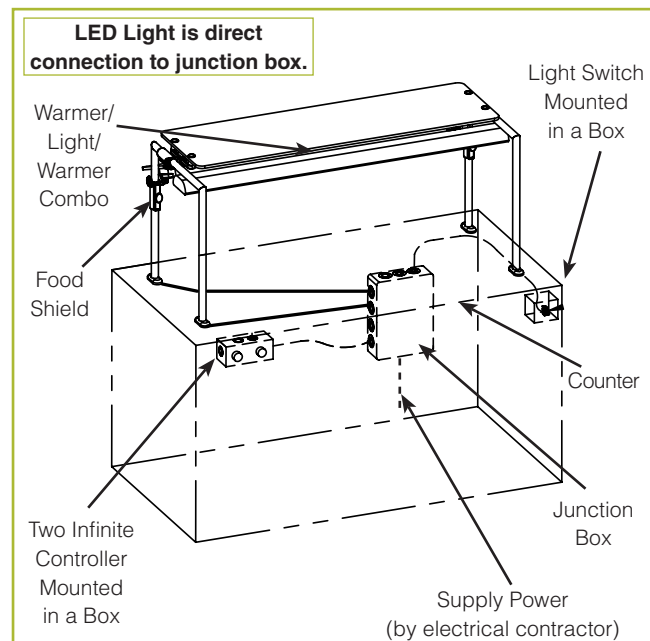
LED Light/Stealth™ Warmer Combo



Stealth™ Warmer Combo Heat Light Heat (Fluorescent)



Stealth™ Warmer Combo Heat Light Heat (LED)

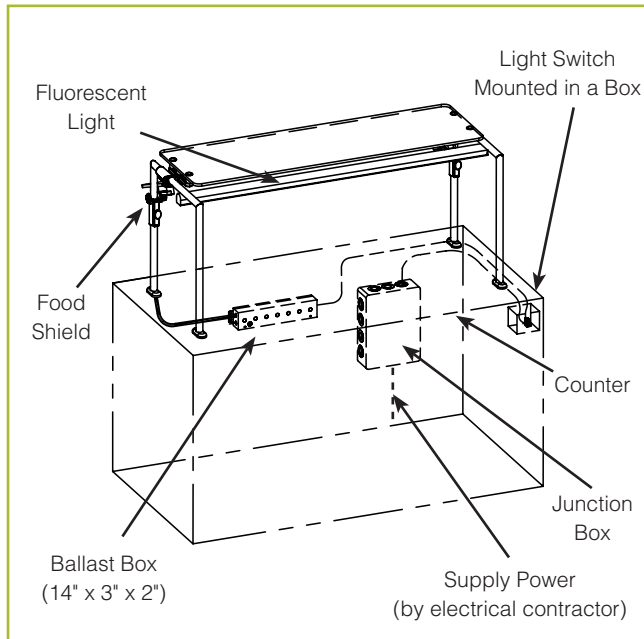


Typical Food Shield Light and Warmer Installations

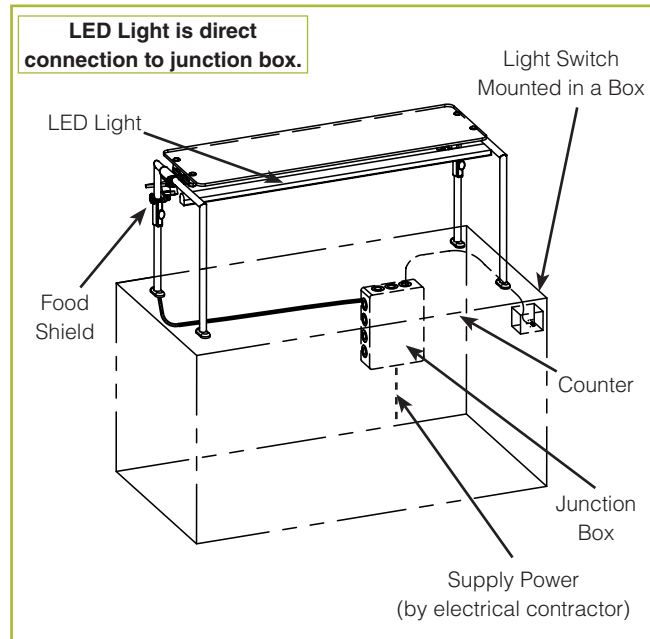
- All wiring should be performed by a certified technician.
- Wires are routed through wire chase/support legs per approved shop drawings.
- Mount the ballast box, infinite controllers near the wire chase/support leg.
- The ballast box, infinite controllers, light switch and 6 feet of conduit/wiring exiting support legs are all provided with all models of BSI, LLC Food Shields. All other components are provided by others.

WIRING INSTALLATIONS

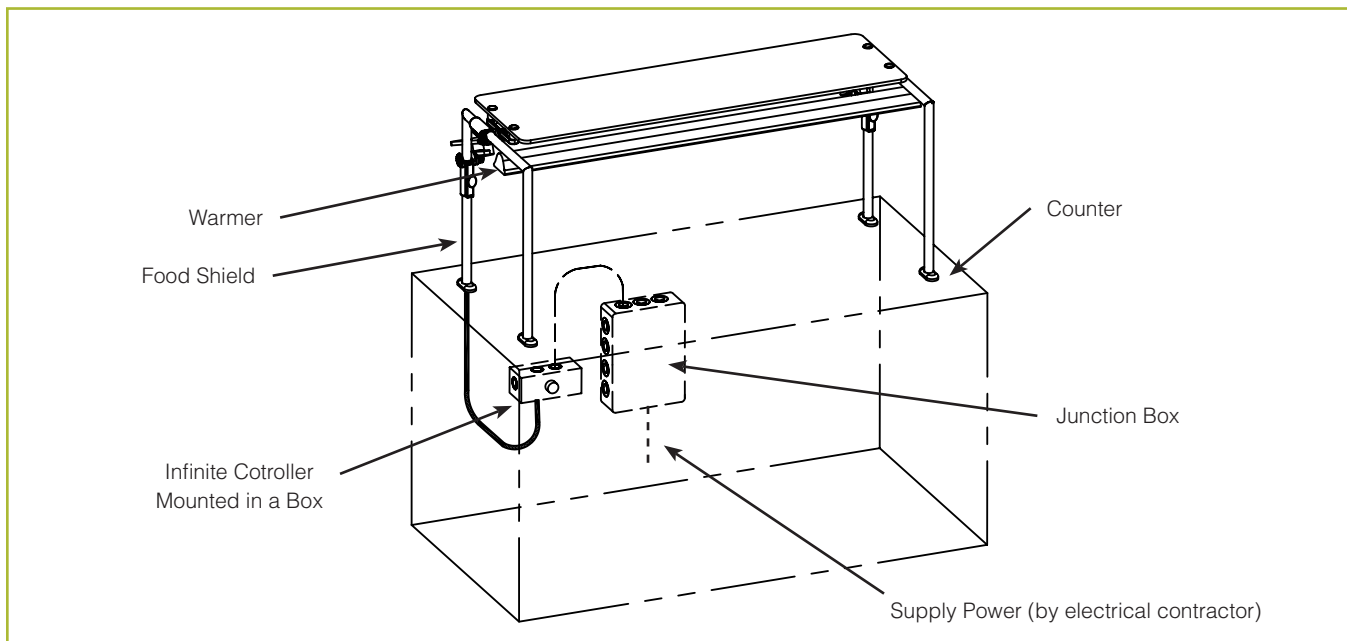
Fluorescent Lights



LED Lights



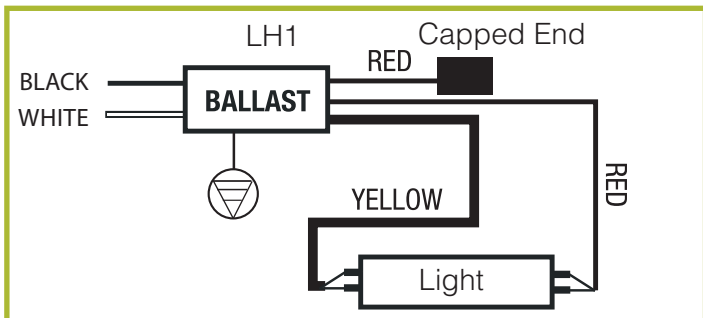
Stealth™ Warmer



Typical Food Shield Light and Warmer Installations

- All wiring should be performed by a certified technician.
- Wires are routed through wire chase/support legs per approved shop drawings.
- Mount the ballast box, infinite controllers near the wire chase/support leg.
- The ballast box, infinite controllers, light switch and 6 feet of conduit/wiring exiting support legs are all provided with all models of BSI, LLC Food Shields. All other components are provided by others.

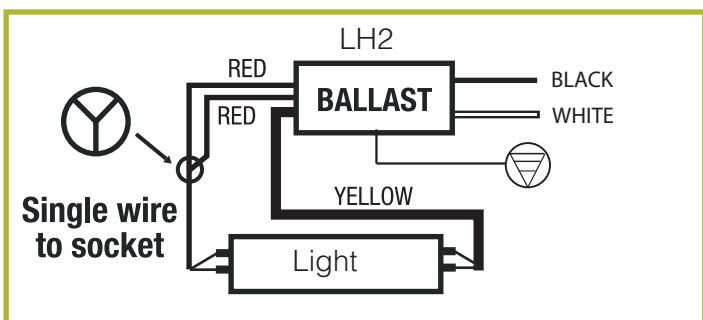
DIAGRAMS FOR FLUORESCENT LIGHTS AND LIGHT/WARMER COMBO UNITS



LONGHORSE 1 - LINEAR

On Stealth Heat/Light Combo

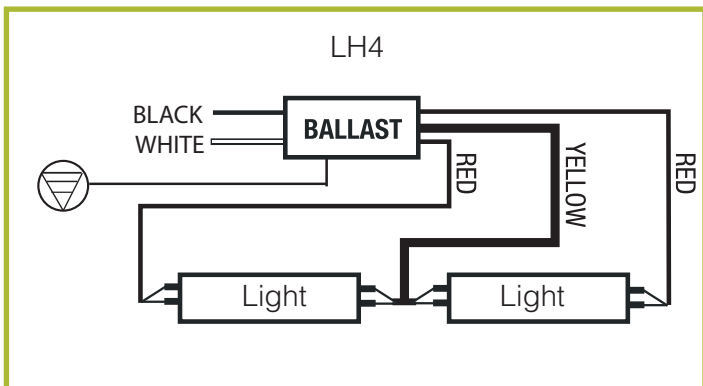
Description	Lamp Type
16"-18" T5 Fluorescent Fixture	F6 / T5
19"-27" T5 Fluorescent Fixture	F8 / T5
28"-39" T5 Fluorescent Fixture	F14/T5
40"-51" T5 Fluorescent Fixture	F21/T5
52"-62" T5 Fluorescent Fixture	F28/T5



LONGHORSE 2 - LINEAR

On Stealth Heat/Light Combo

Description	Lamp Type
65"-74" T5 Fluorescent Fixture	F35 / T5



LONGHORSE 2 - LINEAR

On Stealth Heat/Light Combo

Description	Lamp Type
75"-86" T5 Fluorescent Fixture	(2) F21 / T5

This is the LH2 Ballast but is wired like an LH4.

LONGHORSE 4 - LINEAR

On Stealth Heat/Light Combo

Description	Lamp Type
87"-98" T5 Fluorescent Fixture	(1) F21 & (1) F28 / T5
99"-110" T5 Fluorescent Fixture	(2) F28 / T5
111"-121" T5 Fluorescent Fixture	(1) F28 & (1) F35 / T5
122"-144" T5 Fluorescent Fixture	(2) F35 / T5

BSI, LLC WARRANTY

BSI, LLC warrants its products to be free from defects in material and workmanship from the date of their original purchase for normal use and for the applicable warranty periods set forth below. BSI, LLC's warranty extends only to original purchasers acquiring new products purchased in the United States directly from BSI, LLC, its authorized dealers or other companies specifically authorized by BSI, LLC to act as resellers of its products.

STEALTH WARMERS

BSI, LLC warrants the Stealth Warmer against defects in material and workmanship for a period of two years from invoice date. The warming element is warranted for two years from invoice date.

FLUORESCENT LIGHT BALLAST

The Slimline Light warranty is for material and workmanship for the period of two years from invoice date. The fluorescent bulb itself is not covered under warranty.

LED LIGHT

The LED Light warranty is for material and workmanship for the period of two years from invoice date. The fluorescent bulb itself is not covered under warranty.

THERE ARE NO WARRANTIES EXCEPT AS EXPRESSLY STATED ABOVE, WHETHER EXPRESSED OR IMPLIED, INCLUDING, BUT NOT LIMITED TO, ANY WARRANTY OF MERCHANTABILITY OR FITNESS FOR ANY PARTICULAR PURPOSE. These warranties do not apply to any products which have been altered in any way or to products which have been subject to misuse, abuse, neglect, accident, or which have been damaged in transit. Warranty is void if products are used, held or stored in an unsupervised environment. BSI, LLC's liability for its products shall be limited to the repair or replacement of products or, at BSI, LLC's option, to refunding the purchase price. BSI, LLC will not be liable, under any circumstances, for incidental or consequential damages (including, without limitation, to lost profits) arising in connection with the sale, use, inability to use, repair or replacement of BSI, LLC's products. The liability of BSI, LLC arising from any cause shall not exceed the price paid for the products.

Any claim for breach of the foregoing warranties shall be deemed waived unless submitted to BSI, LLC in writing within 30 days of the date the alleged defect was discovered, or by reasonable inspection should have been discovered. The merchandise must be returned to the BSI, LLC factory from which it was purchased, freight prepaid, and will not be accepted unless prior written authorization to return the merchandise has been issued by BSI, LLC. A copy of the original invoice must accompany the returned merchandise to prove the date of original purchase and warranty entitlement. Any cause of action for breach of the foregoing warranties shall be deemed waived unless brought within one year of the date of the claim submission.