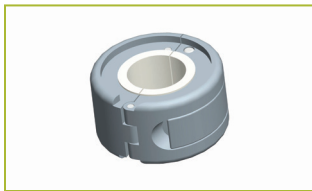
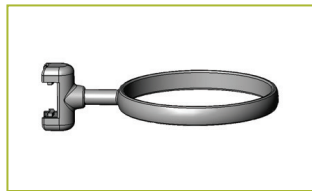


## QUICK REFERENCE GUIDE



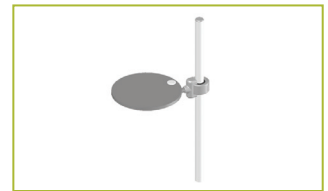
ZS-CLAMP



ZS-RING



ZS-ACS08-EZ



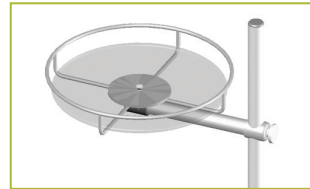
ZS-AS08-EZ



ZS-AT11-1-EZ



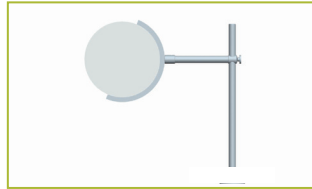
ZS-AT11-2-EZ



ZS-WFT-CM



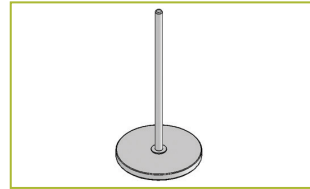
ZS-WFT-TM



ZS-CS



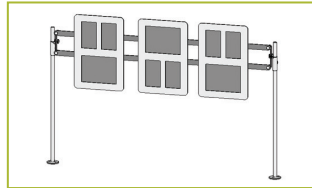
ZS-AS11-TM



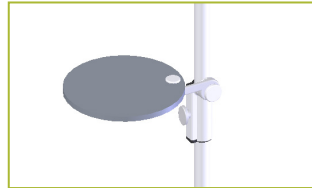
ZS-PB



ZS-PAR



ZS-MF-1



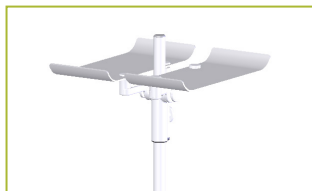
ZS-AS08-B



ZS-ACS08-B



ZS-AT11-1-B



ZS-AT11-2-B